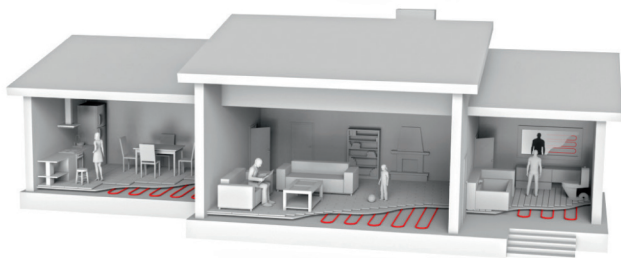


COMFORT  
HEAT



Dry floor  
heating solution





Aluminium foil heating mat **CATE-80** is very thin and suitable for laminated or wooden floor heating. It is the best decision for the installation of floor heating in your hall, rooms and kitchen.

**CATE-80** aluminium foil heating mat is easy to install and ensures equal heat distribution throughout the heated area. Aluminium foil ensures the maximal and equal heat distribution to laminated and wooden flooring. The floor is heated evenly to avoid the „Hot and cold zones“ problem.

We recommend **Comfort Touch** or **Comfort WiFi** thermostat to control the aluminium heating mat **CATE-80**. Thermostats have integrated room and floor sensors and floor temperature limiting function.

The floor temperature sensor is installed under laminated or wooden flooring. The maximal floor temperature cannot exceed 29°C. Smart thermostats with touch screens have energy consumption and planning functions. Thermostats have integrated 5 temperature setting cycles per day and the possibility to set the individual temperature cycles for each day of the week. Thermostats also have a programme restore function.

The aluminium foil heating mat **CATE-80** and thermostat **Comfort Wi-Fi** ensures your home's cosy warmth and minimal energy consumption.



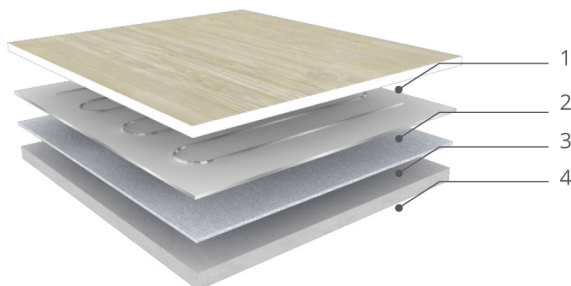
# Aluminium foil heating mat CATE-80

The heating mat can be installed under all parquet and wood types, laminated flooring whether they are new or renovated.

Heated floor area (m <sup>2</sup> )	Dimensions (m)	Output (W)
3,5	0,5x7	280
4	0,5x8	320
4,5	0,5x9	360
5	0,5x10	400
6	0,5x12	480
7	0,5x14	560
8	0,5x16	640
9	0,5x18	720
10	0,5x20	800

## Installation of a base for heated floor

In order to provide warm and comfortable floor heating for your home, it is necessary to prepare the base for the heated floor:

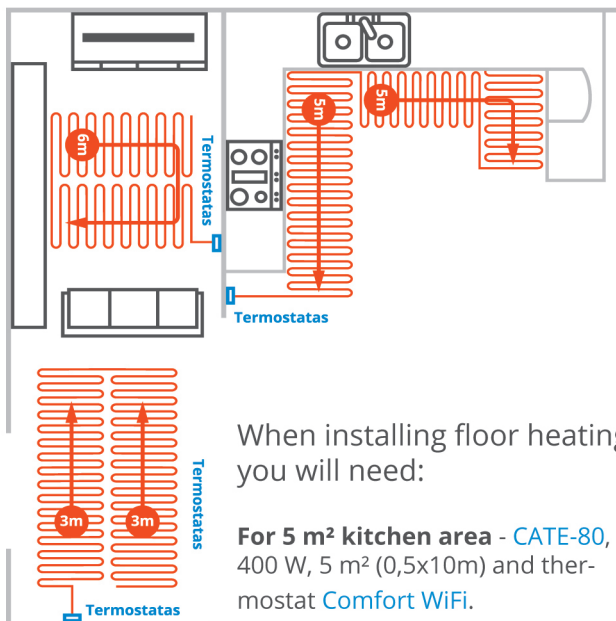


1. Laminated or wooden floor.
2. **CATE - 80** aluminium foil heating mat.
3. Lining (made from wood fiber)
4. Concrete or old floor.

### Base installation:

- Make sure that the surface of the concrete or old floor is dry and clean. Nails or other sharp things may damage your heating mat.
- Nails, screws can not touch the heating mat and power cable.
- On the prepared concrete or old floor, the lining is laid.
- You can use a 6 mm thickness wood fiber plate or 6 - 10 mm thickness polystyrene foam plate (EPS) as the lining.

**Comfort Heat** aluminium foil heating mat **CATE-80** with  $80 \text{ W/m}^2$  output is made of double conductor heating cable with fluoropolymer over jacket and two layers of reinforced aluminium foil. Smooth heat transfer through reinforced aluminium foil ensures equal heat distribution throughout the heated area.



When installing floor heating, you will need:

**For  $5 \text{ m}^2$  kitchen area** - **CATE-80**,  $400 \text{ W}$ ,  $5 \text{ m}^2$  ( $0,5 \times 10 \text{ m}$ ) and thermostat **Comfort WiFi**.

**For  $10 \text{ m}^2$  children room area** - **CATE-80**,  $800 \text{ W}$ ,  $10 \text{ m}^2$  ( $0,5 \times 20 \text{ m}$ ) and thermostat **Comfort WiFi**.

**For  $3,5 \text{ m}^2$  hall area** - **CATE-80**,  $280 \text{ W}$ ,  $3,5 \text{ m}^2$  ( $0,5 \times 7 \text{ m}$ ) and thermostat **Comfort WiFi**.

## HEAT MATH calculation tool

**HEAT MATH** is a universal calculation tool for electric heating systems designed with easy Click steps that provide an automatic selection of recommended Comfort Heat products for different applications and rooms. It takes only 5 minutes to get a full heating system for your home.



<https://comfortheat.eu/calculators/>

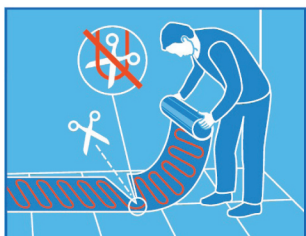
# Installation of the heating mat



Before the installation of the heated floor, prepare the base. Make sure that the concrete or old floor surface is dry and clean. After that lay wood fiber or polystyrene foam plate.



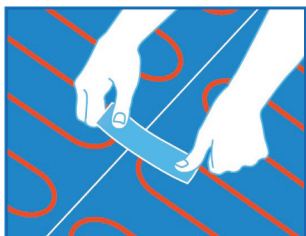
Measure the furniture free area and select the necessary dimensions heating mat. Pay attention that cabinet and integrated furniture can not cover aluminium heating mat.



If you need to turn the heating mat 90° or 180°, cut the aluminium foil. **Do not damage the heating cable!**



4 Cover the total floor area with the aluminium foil heating mat. **Remember, if aluminium foil heating mats cover each other, they will overheat!**



5 When placing two or more aluminium foil mats, it is necessary to tie them in 3 – 4 places with unique aluminium foil strips. You can find strips in the package of the heating mat.



When a heating mat is installed, a laminated or wooden floor can be laid. **Do not lay wooden floor which has metal connections.**

## Thermostat Comfort Touch



The electronic thermostat ComfortTouch, with fine LCD display comes with floor temperature sensor and energy consumption management system. ComfortTouch thermostat has pre-programmed functions adjusted to climate and weekly mode. Energy consumption management system informs of percentage consumption of adjusted temperature levels. Temperature setting range is (+5...+40°C), 16A, IP 21.

NEW

## Comfort Wi-Fi thermostat

gives you the opportunity to control your heating system via smartphone



**Connection:** Wi-Fi connectivity enables remote access to monitor and control the home heating system.



**Smart device control:** the easiest way to control your heating system with smartphone or tablet whenever you are at home or on the other side of the globe.



**Programmable:** easy scheduling and adaptive control ensure that comfort temperature is set at the required time.



**Energy scheduling:** continuous control and monitoring of energy consumption enable financial savings.

**COMFORT  
HEAT**

**Comfort Heat UAB**

T.: + 370 5 270 4596 | M.: + 370 686 08745

Laisvės pr. 123, LT- 06118 Vilnius, Lietuva

info@comforheat.eu | www.comforheat.eu